

Business  
Challenge

Middle of TOGAF

Right Side of  
TOGAF

Left Side of  
TOGAF

Migration Plan

Implementation  
Governance

Architecture  
Change  
Management

What we need?



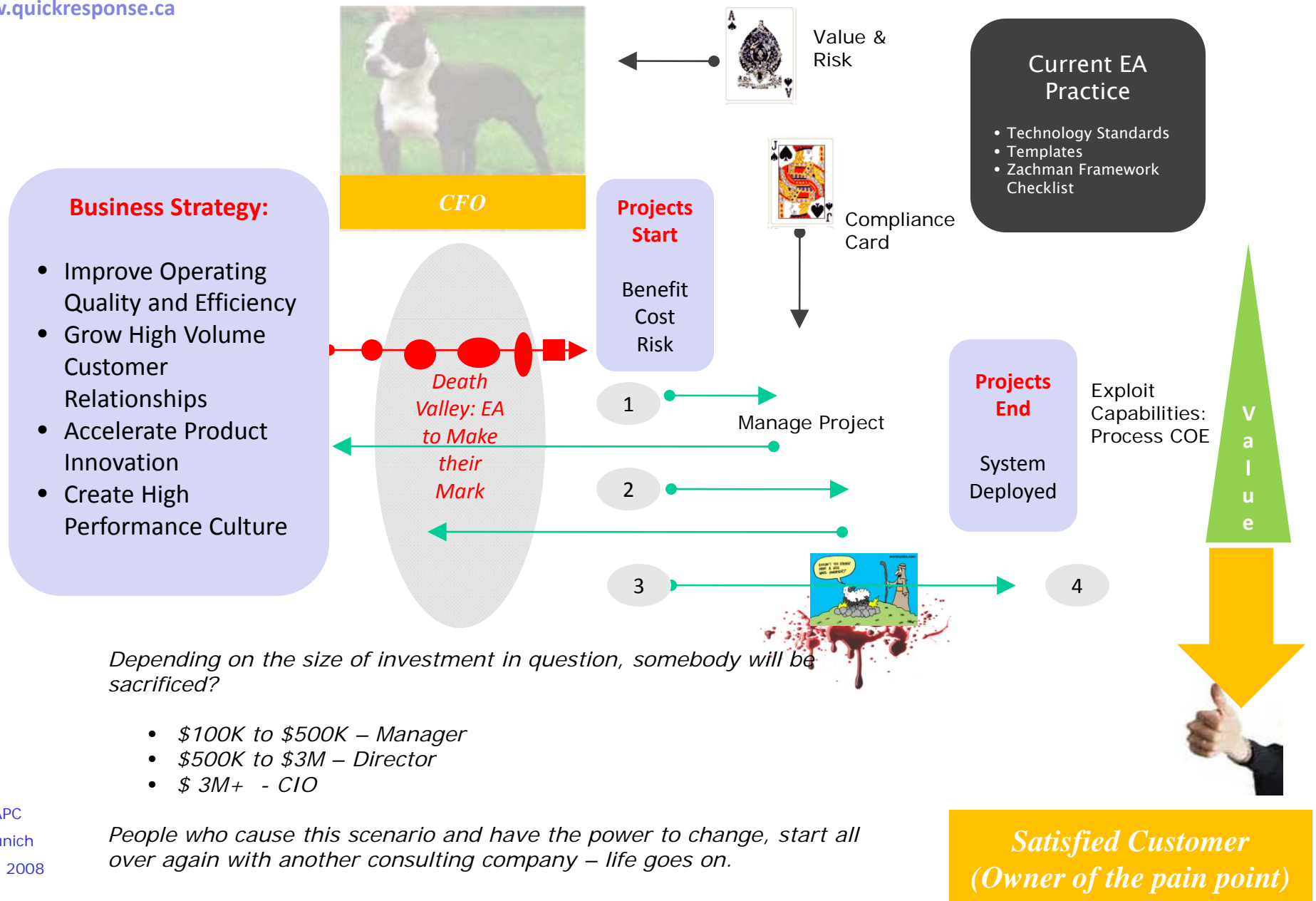
# Left Side of TOGAF

Slide No. 0

Whose help do we need?

# Typical Business Strategy Execution Scenario (that has IT Focus)

www.quickresponse.ca



Business  
Challenge

Middle of TOGAF

Right Side of  
TOGAF

Left Side of  
TOGAF

Migration Plan

Implementation  
Governance

Architecture  
Change  
Management

What we need?

Why does it happen?

## Agenda:

How can we change this trend and  
whose help do we need?

## Approach

- Introduce a concept called – RESPONSIBILITY
- Architect like Implementation Matters?

# Left Side of TOGAF

Business Challenge

Middle of TOGAF

Right Side of TOGAF

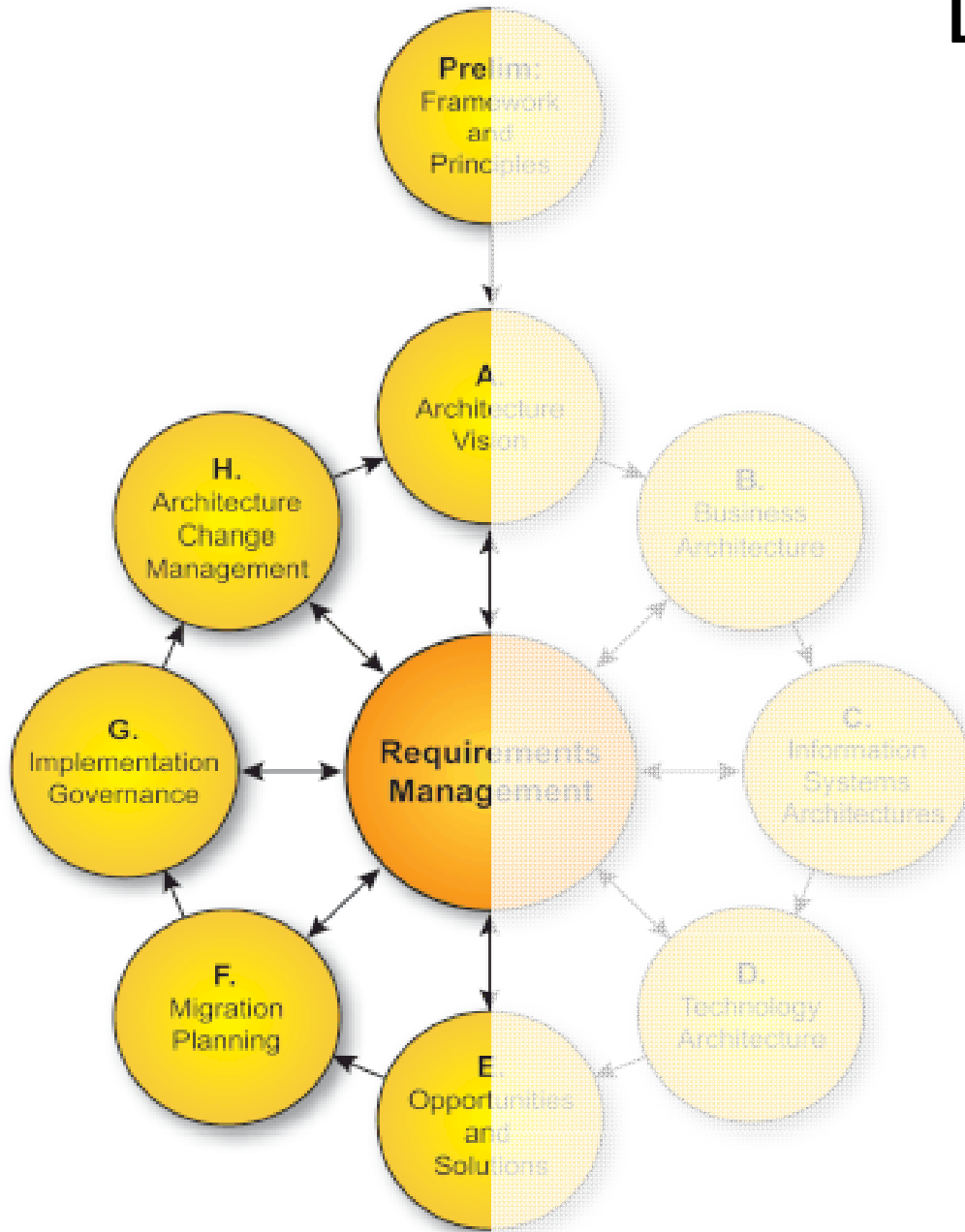
Left Side of TOGAF

Migration Plan

Implementation Governance

Architecture Change Management

What we need?



## TOGAF Framework

- Middle
- Right Side
- Left Side
  - Detail Discussion

Business  
Challenge

Middle of TOGAF

Right Side of  
TOGAF

Left Side of  
TOGAF

Migration Plan

Implementation  
Governance

Architecture  
Change  
Management

What we need?

Middle of TOGAF

## Architecture Requirements: = Problem Space:

- Desired Outcome
  - What prevents you from achieving this outcome?
  - How will you know the obstacles are removed?
  - What are your solution Ideas?

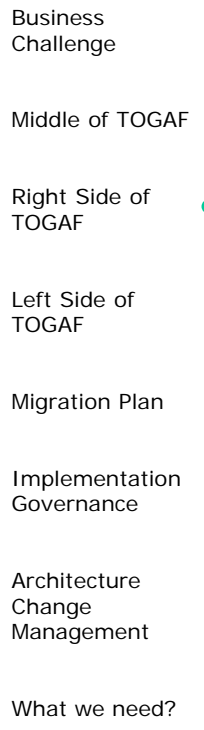
Architecture Requirements are developed iteratively

- Contextual – Why (problem owner)
- Conceptual – What ( people who provide process governance)
- Logical – How ( people who do the work)
- Physical – with what (people who support those who do the work)

Slide NO. 5

### *Examples of Desired Outcome:*

- *Implement ERP, Optimize Supply Chain*
- *Track Patients, Bed Utilization, Clinical Pathways, Patient Satisfaction, Increase Revenue*



## Architecture Vision:

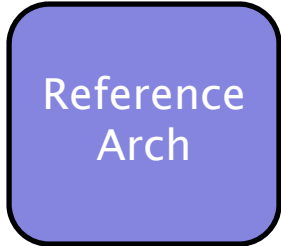
- Why is this opportunity significant?
- Possible scenarios to address the opportunity
- How will you know when it is achieved?
- What do you need from eth sponsor?

## Architecture Development

- AS-IS Business, Data, Application and Infrastructure
- SWOT and Architecture Vision
- TO-BE Business, Data, Application and Infrastructure
- Gaps
- Approved Architecture

## Opportunities and Solutions

- Work Packages – that are right sized
- Ideal and Pragmatic
- Minimum two – implement and Exploit



## *Output:*

- *Work Packages – Initiatives and Projects*
- *Benefits, Cost, Risks (doing and not doing) – why should anybody trust or follow you*

Business  
Challenge

Middle of TOGAF

Right Side of  
TOGAF

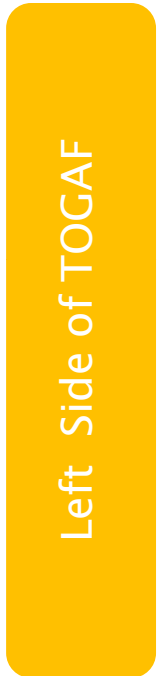
Left Side of  
TOGAF

Migration Plan

Implementation  
Governance

Architecture  
Change  
Management

What we need?



## Where rubber meets the road

- Work – Boxes and Arrows are behind (*Conceptual Level of Detail*)
- Decisions – you have to justify them
- KPI – demonstrate

**RESPONSIBILITY**

Slide NO. 7

*Output:*

- *Direct Value and Organization Learning*

Business  
Challenge

Middle of TOGAF

Right Side of  
TOGAF

Left Side of  
TOGAF

Migration Plan ●

Implementation  
Governance

Architecture  
Change  
Management

What we need?

Opps/Solutions and  
Migration Planning

## Opportunities and Solutions:

- Initiatives with right scope , constraints and Guideline
- Dependencies
- Resources
- Organization Change Management Impact

## Migration Planning

- Portfolio Management
  - Investment Decision – Risk, Value, lights on, Regulated
  - Monitor and Audit
  - Value Realization
- Project Management – PMI
  - Initiation – Scope and Charter
  - Plan – Project Teams

Business  
Challenge

Middle of TOGAF

Right Side of  
TOGAF

Left Side of  
TOGAF

Migration Plan

Implementation  
Governance

Architecture  
Change  
Management

What we need?



## Project Management – PMI

- Execution
  - Design
  - Procure
  - Build
  - Test
- Control
  - Time and Budget
  - Quality of the solution?
- Close
  - Lessons learnt?



## Architecture Activity

- *Architecture Contracts*
- *Logical Level of Detail: How*
- *Architecture and Design*
- *Physical Level of Detail: with-what*
- *Architecture and Procurement*
- *Continuous Alignment and Validation*

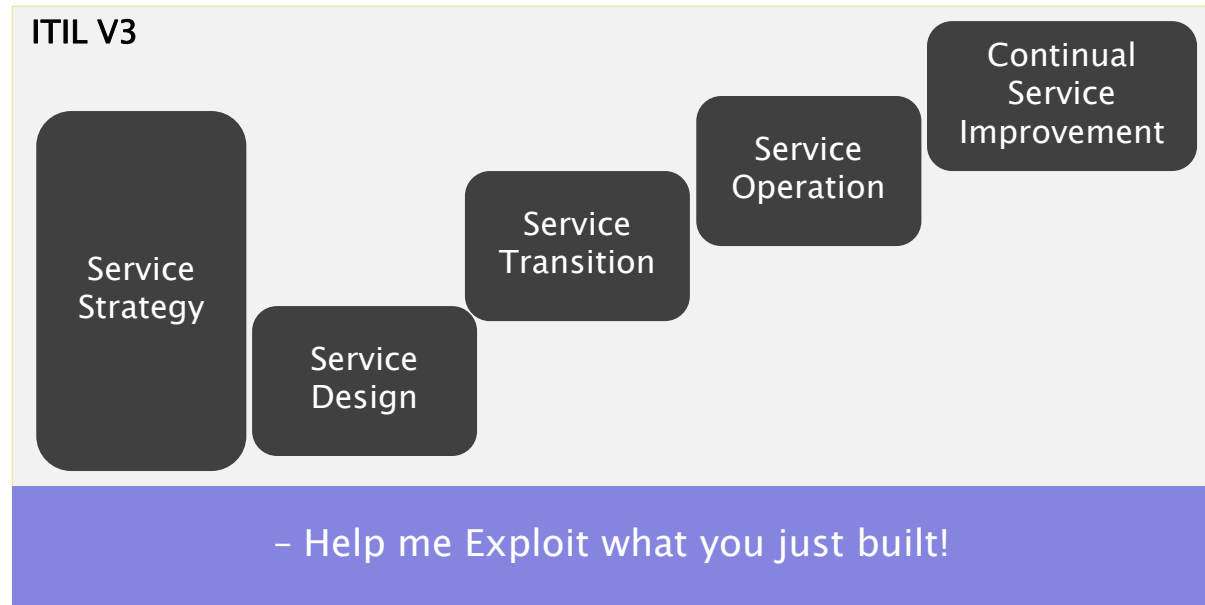
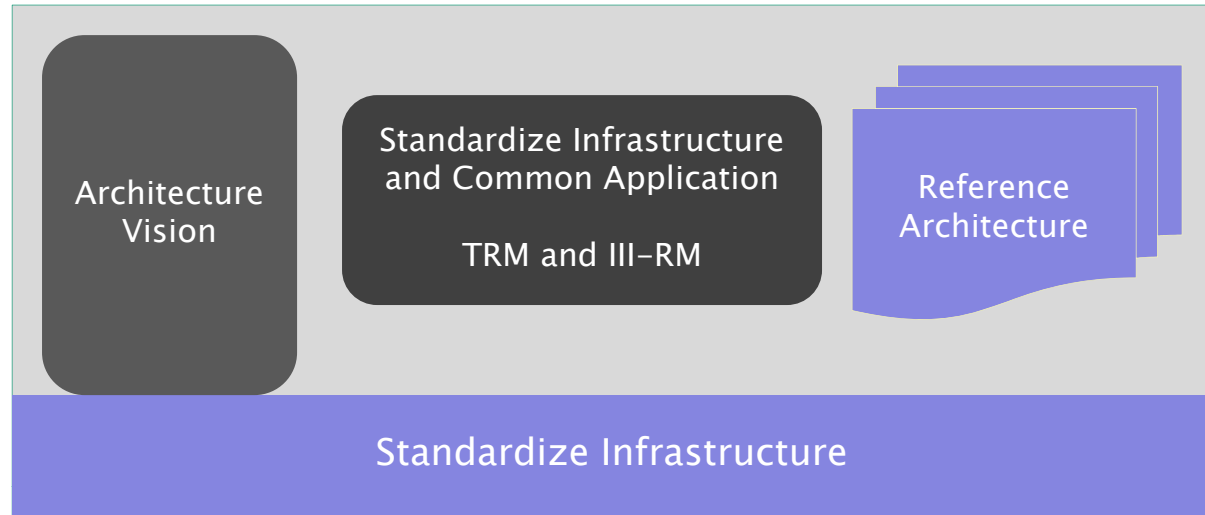
## Stabilization – ITIL

- Valley of Despair

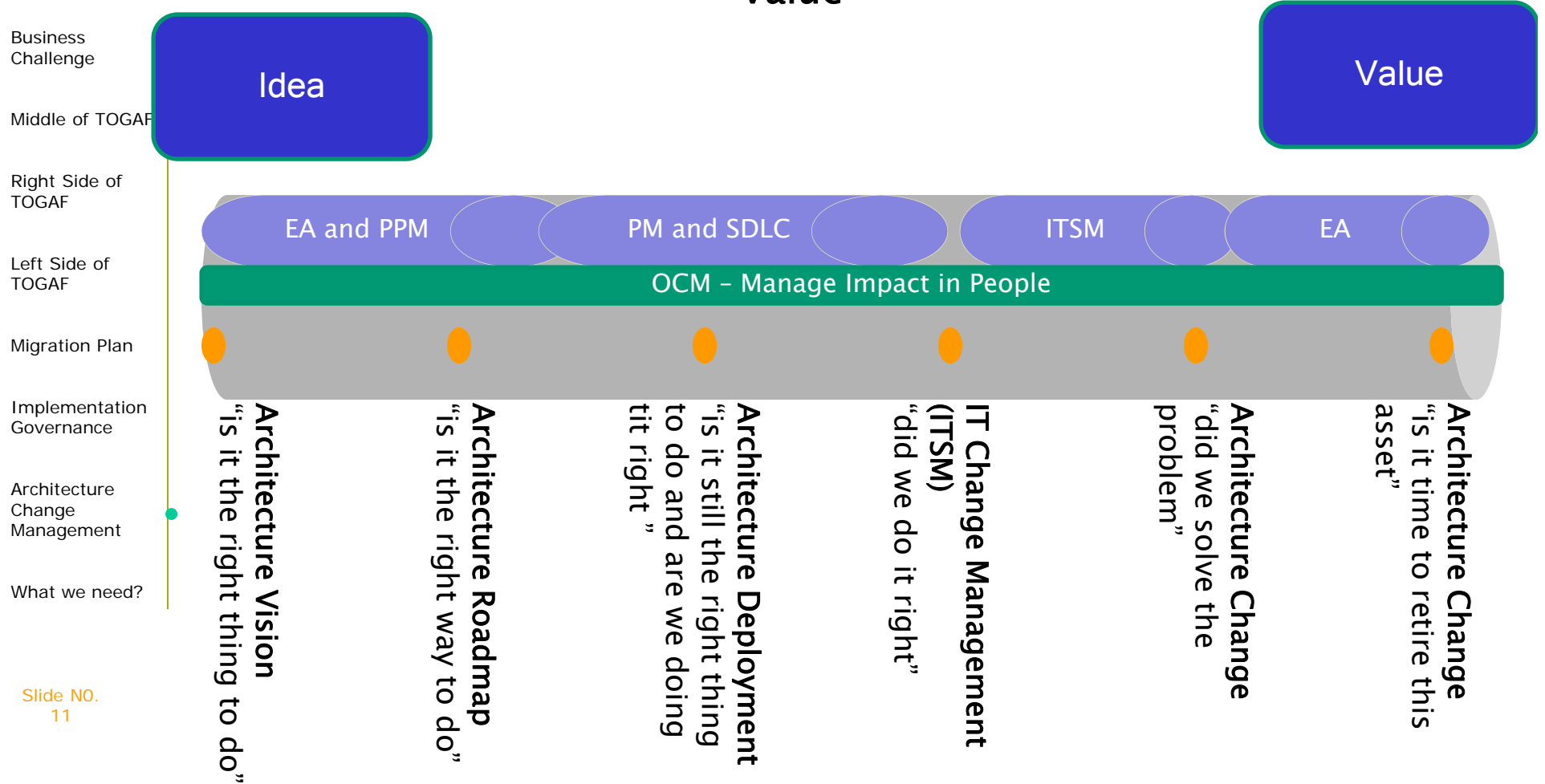


- Business Challenge
- Middle of TOGAF
- Right Side of TOGAF
- Left Side of TOGAF
- Migration Plan
- Implementation Governance
- Architecture Change Management
- What we need?

Architecture Change Management



# We need all these disciplines to deliver Value



## Question?

Business  
Challenge

Middle of TOGAF

Right Side of  
TOGAF

Left Side of  
TOGAF

Migration Plan

Implementation  
Governance

Architecture  
Change  
Management

What we need?

- How are these disciplines engaged within your organization ?
- What challenges you have encountered?
- What is your experience?
- What can The Open Group do?
- What can you do?

# Thank You

[Jason.Uppal@quickresponse.ca](mailto:Jason.Uppal@quickresponse.ca)